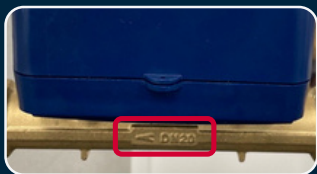




# BARN TALK® Wireless Water Meter

READ BEFORE INSTALLING

- The water meter can be installed on either side of a medicator.
- Plumb the water meter in a straight section of pipe of at least 12 inches long.
- The arrow in the center of the brass pipe should point the same direction as the water flow.




## IMPORTANT

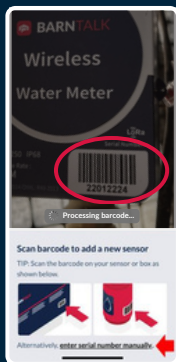
The water meter will not read if the arrow is installed backwards.

*\*Once installed, water meter readings will take ~20 min to appear in the app.*

If you don't see your water meter in the app, pair it using Scan to Pair.

- Open the app, select the Gateway tile for the water meter you'd like to pair.
- Click  in the top right and "Add Sensor" when prompted.

Visit [go.barntools.com/pair](https://go.barntools.com/pair) to learn more.



# Set Up Your Water Meter Alarms:

- To learn how to set up Water Meter alarms in the Web Portal, visit [go.barntools.com/WMAlarm](https://go.barntools.com/WMAlarm).
- Direct Link to Web Portal: [barntalk-portal.barntools.com](https://barntalk-portal.barntools.com)

SCAN WITH



PHONE CAMERA

WATER METER HELP ARTICLE

Scan the QR code to read more about installing your BarnTalk Wireless Water Meter.

## ADDITIONAL SUPPORT RESOURCES

-  Install Video: [go.barntools.com/water](https://go.barntools.com/water)
-  Help Center: [support.barntools.com](https://support.barntools.com)
-  Email Support: [support@barntools.com](mailto:support@barntools.com)
-  Call/Text: **515-272-5122**  
or Call Toll Free: **855-580-0058**  
Monday-Friday, 8 AM-5 PM CST