



BINTALK™

EASY INSTALL GUIDE

1. Start by unboxing and pairing your new BinTalk Feed Sensor.

Your BinTalk sensor may be pre-paired to your Gateway. If you don't see your BinTalk sensor in the app, pair it with Scan to Pair. Visit go.barntools.com/pair to learn more

2. Enter your bin parameters in the app.

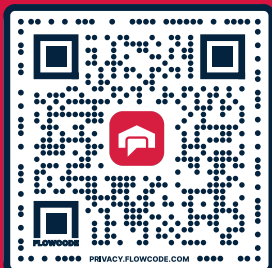
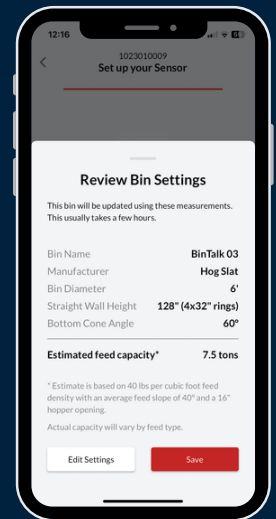
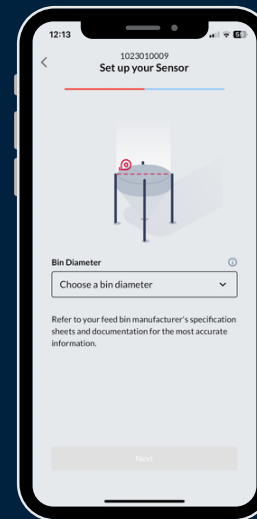
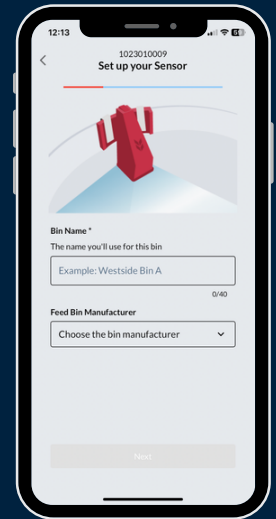
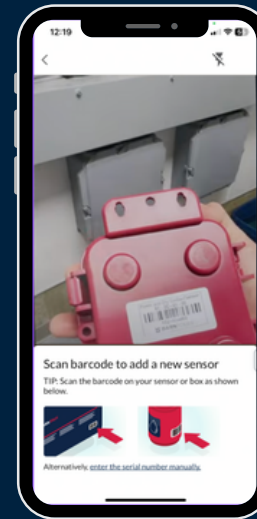
Next, enter the parameters and specs for the feed bin you will install the BinTalk sensor on. This ensures BinTalk provides you with the most accurate bin level readings:

- Type in a **name** of your BinTalk sensor and choose your bin manufacturer from the dropdown menu.
- Enter the **bin diameter** and click next.
- Specify the **bin height** (excluding top and bottom cones) by the number of bin rings, or by measuring.
- Choose the **bottom cone angle** from the dropdown, or enter a different value manually.
- Review the bin settings and click **"Save."**

3. Secure the camera sensor to the collar of the feed bin.

We recommend sliding the sensor to sit near the hinges of the lid to prevent damage during feed deliveries. To further secure your sensor, use the two included self-tapping screws.

NOTE: BinTalk automatically wakes up within 6 hrs. post-install when paired to the Gateway. For a faster reading within 1 hr., open the solar panel cover and press the pairing button. If paired and in range of GW, the 'L1' light will flash green after 10-15 seconds. If 'L2' flashes red, contact Support.



Scan the QR code for additional BinTalk resources within our online Help Center.



Email our support team: support@barntools.com



Call/Text our support team: 515-272-5122

5. Next, **run the connecting cord outside the feed bin and secure the solar panel on the sun facing side** of the feed bin (or the side that points to the equator). The solar panel has four powerful magnets on the back to secure it to the top of your feed bin. Ensure the solar panel is mounted so the wires are facing down towards the ground.



6. **Put the enclosed Label with BinTalk Serial number on the bin** in a prominent place. Use a permanent marker to write the bin number in the white space. This label includes the BinTalk S/N which could be useful for future reference.



ADDITIONAL SUPPORT RESOURCES



Help Center and FAQs: support.barntools.com



Email our support team: support@barntools.com

Call or Text: **515-272-5122**



Call Toll Free: **855-580-0058**

During the hours of 8 AM - 5 PM CST Monday-Friday